

STBT bracket fitting advice

Here are some helpful points which will contribute to a safe and secure fitting of the STBT brackets onto the following models of Tillett car seats for road and race track use.

B6-40, B6-44, B6-43 XL, B6-47 XL (side mount versions)

B6-44 Screamer, B6-40 Screamer - FIA seats

B6-43 XL Screamer, B6-47 XL Screamer XL - FIA seats

B7-40, B7-44, B7 XL - FIA seats

B8-43, B8-44.5

B9-43, B9-44.5

B10-44.5, B10-45 XL, B10-48.8 XL

C1-41 C1-44, C1-43 XL, C1-47 XL - FIA seats



The STBT is an aluminium powder coated bracket designed for use with Tillett seats. This model is made from 5 mm thick aluminium and is 60 mm taller than the STBi. It is used in saloon cars where the seat must be lifted to enable good vision.

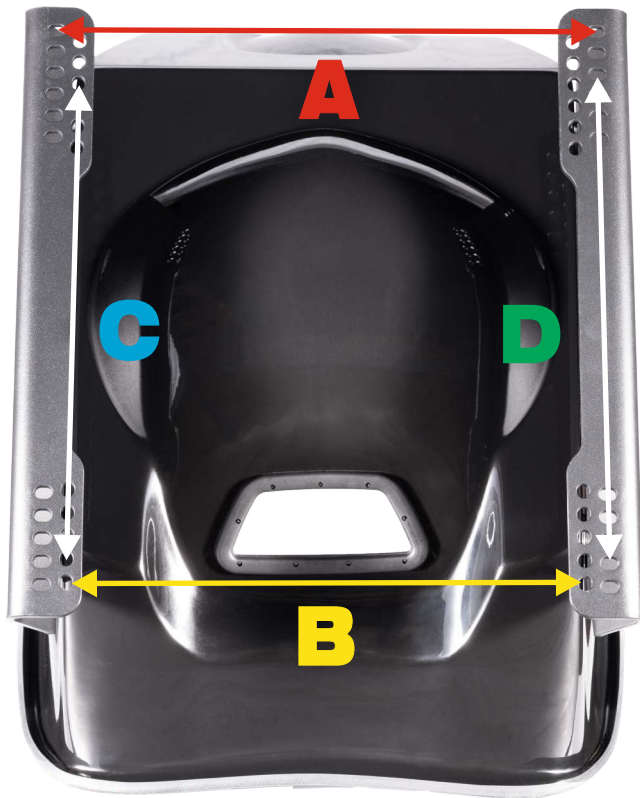
The listed seats above all have a slight 2 ° positive camber on the sides. This is to reduce the width at the base to the minimum and increase rigidity. The STBT brackets have the 2° angle on the upright to match this. It is important to understand the correct spacer setup required to stop the front upper portion of the bracket hitting the protruding leg support area. As the seat is dropped to use the lower front holes additional spacers will be required to avoid contact. This will of course widen the floor hole options. However, as Tillett seats are very narrow across the base the width will still be narrower than other aftermarket competition seats.



helps avoid the leg support bulge. With all models but particularly with the XL versions, as the lower two front holes are used, ally or nylon spacers are required to avoid the leg bulge of the seat coming into contact with the top of the bracket.

The hole spacing to attach to the side of the seat is set at 29 cm. This is mostly standard amongst race car seat manufacturers. The STBi has holes in the upright section to allow the seat to be tipped raised and lowered. In the horizontal element there are numerous holes to allow fitment to the PTRi runners as well as many other runner and platform brackets. Please note, we advise against using any seat adjustment runners in a race car, as runners are only intended for road use. Please ensure that the bolting points in the floor of the car are suitably strong and strengthen them substantially if not.





Hole spacings when bolted onto seat models:

B6 (side mounted version), B6 Screamer, B7, B10, C1

(Please note; The B10 always requires 2 additional 4 mm spacers at the front to square the brackets.)

Outer row of slots

With the seat set on the fourth hole up without spacers, the **A** dimension across the width using the outer row of slots is 36 cm. Adjustment is possible by using the slots and by using additional Tillett spacers.

Inner row of smaller slots

There is a second row of holes **B** which are 32.5 cm across. Again the spacers can be used to adjust this width.

Hole spacing options when bolted on the wider seat models: B6 XL (side mounted version), B6 Screamer XL, B7 XL, B8, B9, B10 XL, C1 XL

(Please note; The B10 always requires 2 additional 4 mm spacers at the front to square the brackets.)

The larger seats are 2 cm wider across the base. Therefore, the **A** dimension would be 38 cm and 34.2 cm on the inner row **B**.

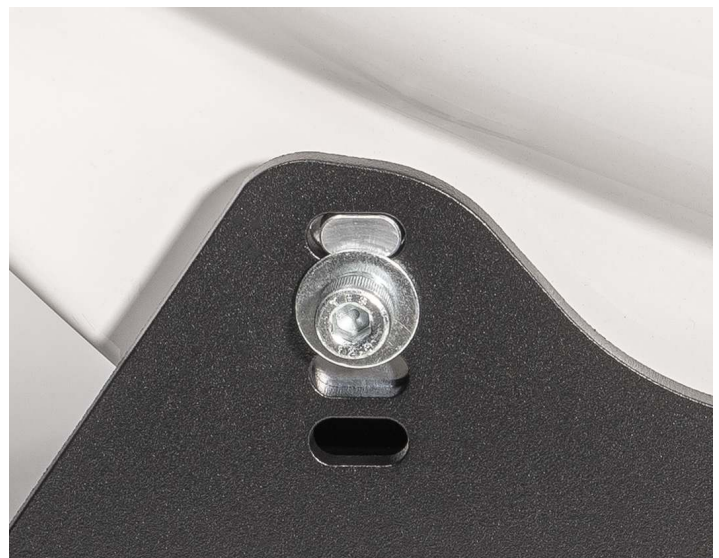
With the front to back hole array **C**, many hole combinations can be achieved.

Using the inner holes gives options from 230 mm to 365 mm in 15 mm increments, with 2 mm leeway in the slot combinations.

The 315 mm and 345 mm holes will both line up with the PTRi adjustment runners.

Using the outer inward facing slots **D** means hole options from 240 mm to 375 mm also in 15 mm increments.

It is recommended to use as few spacers as possible to reduce twisting forces on the bolts. Spacers should be a minimum diameter of 40 mm and made of hard nylon or metal. High quality M8 bolts should be used for all mounting points and we recommend a torque setting of 35nm when fitting the bracket to the side of the seat. In the side mounting points make sure there is at least 10 mm of thread passing into the captive seat thread.



Optional TK8 pegged spacer kit

For extra strength in rearward impacts, an option is the TK8 Tillett pegged aluminium spacer kit. This fills the slot above the one that the bolt uses. The kit contains two pegged spacers which are 40 mm diameter and 4 mm thick. Also two x 40 mm diameter x 4 mm thick plain aluminium spacers for the rear mounts. Four additional 4 x 40 mm diameter x 2 mm thick Nylon spacers are included to move the brackets outwards and enable use of the lower hole settings whilst avoiding the leg bulge shown in the picture above.

